

NOTES:

HURSTVILLE LEP 2012 (MAP 4)		
LAND ZONING	= IN2	= LIGHT INDUSTRIAL
FSR	= N	= 1:1
HEIGHT	= K	= 10 METERS MAX

BUILDING CODE OF AUSTRALIA - SORTING SHED

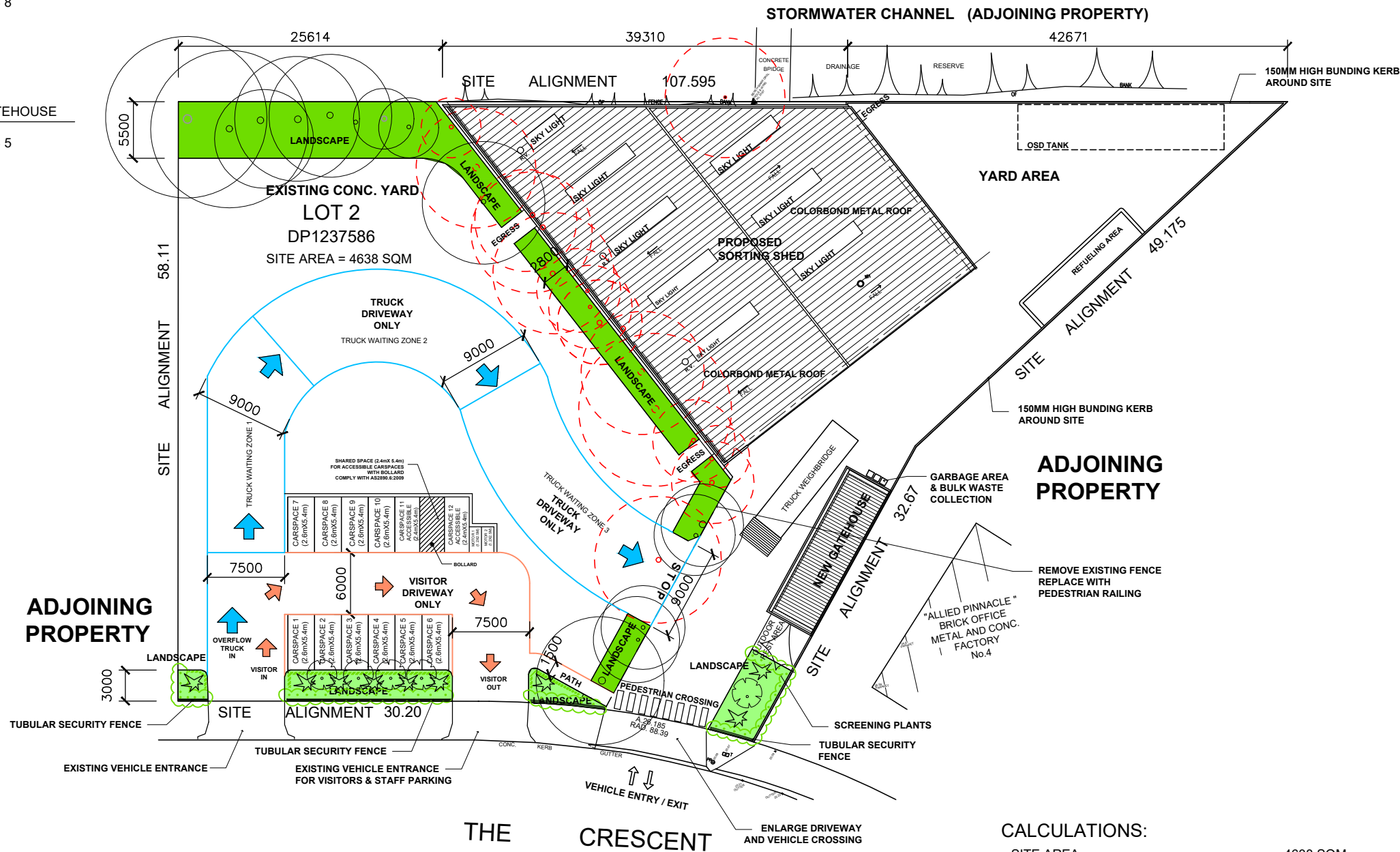
CLASSIFICATION	- CLASS 8	
RISE IN STOREY	= 1	
TYPE OF CONSTRUCTION	= C	

BUILDING CODE OF AUSTRALIA - GATEHOUSE

CLASSIFICATION	- CLASS 5	
RISE IN STOREY	= 2	
TYPE OF CONSTRUCTION	= C	

EXTERNAL WALLS (FRL)

LESS THAN 1.5M	= 90/90/90
1.5M TO 3.0M	= 60/60/60
3M OR MORE	= -/-/-
EXTERNAL COLUMNS	
LESS THAN 1.5M	= 90/-/-
1.5M TO 3.0M	= 60/-/-
ROOF	= -/-/-



LEGEND:

	EXISTING TREES TO BE REMOVED (16 OFF)
	EXISTING TREES TO RETAIN

CALCULATIONS:

SITE AREA	= 4638 SQM
CAR PARKING SPACE (INCL. DISABLED CAR SPACE)	= 12 SPACES
MOTOR BIKE PARKING SPACE	= 2 SPACES
LANDSCAPE AREA	= 381.8 SQM
	= 8.23% OF SITE AREA



PROPOSED SITE PLAN

REFER TO ARBORIST REPORT FOR DETAILS OF EXISTING TREES.

NOTE:

VERIFY ALL DIMENSIONS WITH ACTUAL JOB SIZES AND MODIFY WHERE NECESSARY BEFORE COMMENCING SITE WORK OR SHOP FABRICATION.

N°	DATE	REVISION
A	17.10.19	SUBMIT FOR DA
B	11.12.19	SUBMIT FOR DA
C	20.12.19	SUBMIT FOR DA
E	02.03.21	REVISION FOR DA

PROPOSED RESOURCE RECOVERY FACILITY

at
2F THE CRESCENT
KINGSGROVE
(LOT2, DP 1237586)
(Georges River Council)

for

W & J LEE PROPERTY INVESTMENT PTY LTD

DRAWING TITLE

PROPOSED SITE PLAN

ROBERT LEE ARCHITECTS
PTY LTD
ABN 25 000 971 488
SUITE 7 LEVEL 1
578 RAILWAY PDE. HURSTVILLE
NSW 2220
TELEPHONE: (02) 9570 1644
FACSIMILE: (02) 9570 3034
NOMINATED ARCHITECT:
RUSSELL C. LEE (ARN 4190)

SHEET SIZE	A3	SCALE	1:500
DATE	MAR 2021	DRG No.	
DRAWN BY	Fang Zhou		DA-01E